

The Guildwood Parkway

Erosion Control Project—Phase II

Reduce Erosion
Regenerate Habitat
Realize Your Waterfront

Fall 2007

What is the Guildwood Parkway Erosion Control Project—Phase II?

In 1987, the Toronto and Region Conservation Authority (TRCA) initiated the “Guildwood Parkway Erosion Control Project” to stabilize the sector of shoreline below Guildwood Parkway from the Guild Inn east to Morningside Avenue. The primary objective of the project was to protect the base of the bluffs from erosion caused by wave action from Lake Ontario.

Phase I of the project concluded with the construction of an armourstone revetment at the land/water interface from the base of the access road for the Guild Inn east to 467 Guildwood Parkway, providing toe protection for both public and private property.

In 2004 TRCA initiated Phase II of the project **to provide long-term protection against erosion** for the remaining properties on the street, from 473– 483 Guildwood Parkway.

Your Involvement and the Class Environmental Assessment Process

The Guildwood Parkway Erosion Control Project - Phase II was designed and developed in compliance with the Environmental Assessment Act, following the planning and design process outlined in the *Class Environmental Assessment for Remedial Flood and Erosion Control Projects (2002)* or Class EA.

The Class EA process provides an efficient means to **protect existing public uses and infrastructure from shoreline and bluff erosion, while**



View of the shoreline below Guildwood Parkway, looking east from near the Guild Inn towards Morningside Avenue. Phase II of the project (highlighted in red) will stabilize another sector of shoreline to protect seven residential properties at the top of the bluffs.

improving ecological and aesthetic features and public access.

A Community Liaison Committee (CLC) played a vital role in developing the preferred alternative, which was composed of several benefiting landowners, active local residents and concerned community members who wanted to ensure that the wants and needs of the close-knit Guildwood Village community were reflected in the final design.

In compliance with this document, an Environmental Study Report (ESR) was prepared which outlines the entire planning and design process, including documentation of public involvement.

A Notice of Filing for the ESR was published in the *Scarborough Mirror*

on December 17th, 2004. Following a 30-day public review period, project approval was granted under the Environmental Assessment Act on January 16th, 2005. All regulatory approvals required for construction, including authorization pursuant to Section 35(2) of the *Fisheries Act*, *Navigable Waters Protection Act* and the Ministry of Natural Resources have been obtained.

Your New Shoreline

The approved design is a shoreline treatment consisting of smooth armourstone headlands with a rubble core at the westerly and easterly project limits, with an offshore breakwater made of randomly-placed

armourstone with a rubble core in between the headlands. A sandy beach will remain between the two headlands, with a small amount of gravel along the backshore for stability.

In an effort to **improve fish habitat**, shoals will be constructed next to the headlands and offshore breakwater. These shoals sit on the lake floor and rise to a level just under the surface of the water providing for habitat creation.

Access to the site is provided along an existing construction road off Guildwood Parkway near the Guild Inn which runs down the bluffs and over to the existing revetment extending to below 467 Guildwood Parkway. A temporary access road constructed of rubble from local demolition sites will be built from the end of the existing revetment east along the beach to facilitate construction of the headlands and breakwater. Once these shoreline features are constructed, the access road will be removed and the beach will be fully restored.

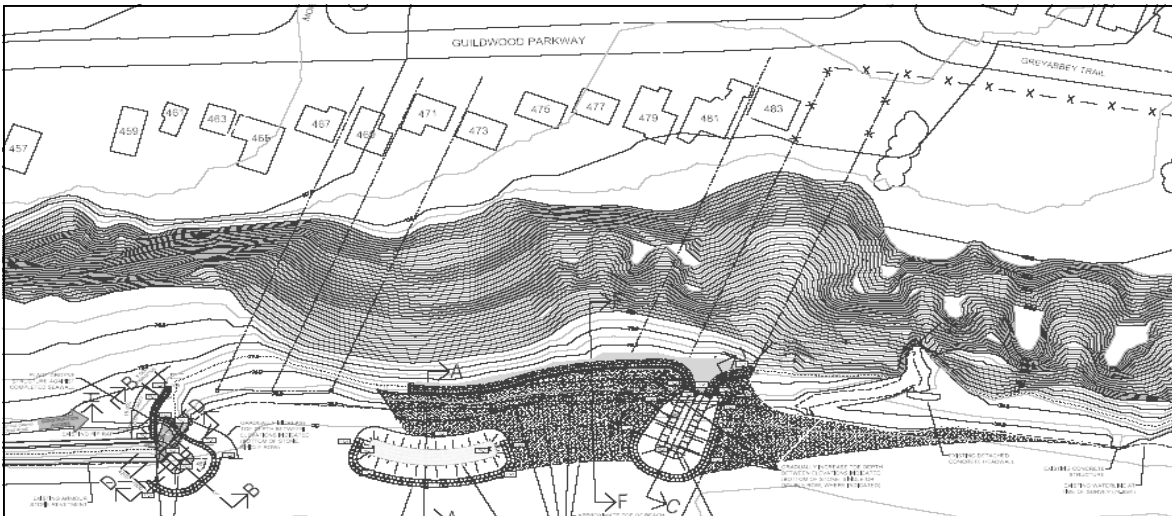
When Will Construction Start ?

Delivery of rubble used to construct the temporary access road is expected to begin on October 29th, 2007. Work is anticipated to continue until approximately mid January 2008, when the City of Toronto will utilize the temporary access road to repair the outfall at the foot of Morningside Avenue. Work will re-commence upon completion of the outfall repairs, expected mid February 2008 and will continue until March 31, 2008. No in-water work can take place between April 1 - June 30 annually due to fisheries timing windows set by Ministry of Natural Resources. All work, including the removal of the access road and restoration of the beach is to be completed by March 31, 2009.

For information on the City of Toronto repair work to the Morningside outfall, please contact Kumar Sivakumaran at (416)392-9642.

Hours of work for the Guildwood Parkway Erosion Control Project - Phase II are Monday to Friday, 7:30 am - 5:00 pm. During construction, public access to the Guild Inn construction road and shoreline will be restricted but will be permitted on weekends and holidays.

General Plan of the Preferred Alternative



For more information on the Guildwood Parkway Erosion Control Project - Phase II, please contact:

Jim Berry, C.E.T., Manager, Environmental Engineering Projects
Phone: 416-392-9721 • Email: jberry@trca.on.ca

Joe Delle Fave, C.E.T., Supervisor, Construction Projects
Phone: 416-392-9724 Email: jdellefave@trca.on.ca

Toronto and Region Conservation
1 Eastville Avenue, Scarborough, ON M1M 2N5

TORONTO AND REGION
Conservation
for The Living City



Reduce Erosion
Regenerate Habitat
Realize Your Waterfront

www.trca.on.ca

